

Message from the President

This and That

The big cottonwood tree down the street from me has announced fall with the yellowing of its leaves. The football season is in full swing, chile is roasting on the street corners and the days are getting shorter. My kids have their Halloween costumes picked out and I've got the woodpile stocked for the winter. There's a lot I like about fall and a few things I don't. I don't like coming home in the dark, I don't like bare trees and I miss the flowers. I did enjoy a new addition to the fall (actually late summer) events this year at the second annual GAMA family fun fiesta at the National Hispanic Center. There was a great band, great food, a pinata and great company - including new members Drs. Ben Muneta and Louise McDade. Thanks to all of you who attended. To see or purchase photos go to: <http://gamafamilyfunfiesta.shutterfly.com/>.

The Board of Trustees of GAMA has been busy this past month working on a response to the challenge of offering ideas to the New Mexico Human Services Department regarding their plans to Modernize Medicaid (see last month's newsletter for more information.) I want to thank Drs Aamodt, McAneny, Whisler and Toubbeh for their hard work on this important project. A link to their work is <http://gamamed.org/modmedicaid>.

GAMA officer and trustee elections are at hand and the nominating committee has worked hard to find a slate of candidates who will represent the members of our diverse community. The slate of officers will be available October 3, 2011 at <http://gamamed.org/election>. Please expect a ballot to arrive by email soon. If your email has changed or if you have not received the electronic version of this newsletter please call Diane or Teresa at 821-4583 to update your email.

These are exciting times for the Westside medical community. Presbyterian Rust Medical Center in Rio Rancho will have its grand opening Saturday, October 22. Congratulations. UNM Sandoval Regional Medical Center will open spring 2012. Lovelace Westside Hospital has undergone a number of renovations. Those of us who work on the East side of town are very happy for you and perhaps just a bit jealous...

Have a have a good month, take good care of your patients and take good care of yourself.

Dion Gallant, MD
dgallant@phs.org



Dion E. Gallant, M.D.

Our mission

"To promote excellence in patient care by identifying and solving physician practice problems in any practice environment through advocacy, education & collegiality"

Greater Albuquerque Medical Association

OFFICERS

Dion E. Gallant, M.D.
President
Sally Harris, M.D.
Vice President
Benjamin Chan, M.D.
Secretary
Becky Shoden, M.D.
Treasurer
Jeremy Gleeson, M.D.
President-Elect
Jeffrey P. Ross M.D.
Immediate Past President

TRUSTEES

Eddie Bengé, M.D.
Lee K. Brown, M.D.
David Clanon, M.D.
Donald Porter, M.D.
Cordelia Sever, M.D.
Hala Toubbeh, M.D.

COUNCILORS

Denise Aamodt, M.D.
Allen B. Adolphe, M.D.
Barbara L. McAneny, M.D.
Barbara J. McGuire, M.D.
Diane Sansonetti, M.D.
Robin J. Tuchler, M.D.

EXECUTIVE DIRECTOR

H. Diane Snyder

STAFF

Communications &
Marketing Director
Teresa K. Deras

EDITORIAL POLICY

GAMA Reports is published monthly by the Greater Albuquerque Medical Association. Opinions expressed herein do not necessarily represent GAMA policy. Comments from members are welcome and may be mailed to GAMA, 7770 Jefferson NE, #420, Albuquerque, NM 87109, (505) 821-4583, or e-mailed to gama@gama-med.org. Material may be edited.

Guest Editorials must have prior approval of subject by the editor and should not exceed 800 words and may be edited;

The deadline for submission of final copy is the first Wednesday of the month preceding the month of publication

Please note that letters to the editor should be limited to 250 words and guest editorials as well as articles should be limited to 800 words. Subscription rates are included in dues. Advertising rates given on request. Advertisements appearing in this publication do not constitute endorsement by the Association of the product or service.
Jeremy Gleeson, M.D. - Editor

GAMA Board meetings are held every month on the second Thursday. The meetings are held at 7770 Jefferson NE in the 4th floor conference room beginning at 7:00am. -Members are welcome to attend.

VISIT THE GAMA WEBSITE AT:
<http://www.gamamed.org>

Article and ad submission deadlines
for the November Newsletter
Wednesday, October 14, 2011

Evidence or Witchcraft?

I was distressed, perhaps the real word is appalled, to read the formulary apparently adopted by the NM Board of Chiropractic in August. You may recall that at the legislative session at the beginning of the year the chiropractors' proposal to become primary care physicians was, thankfully, rejected by the legislature.

Please do not get me wrong. I believe chiropractors provide some benefit to patients, regardless of the questionable, or actually non-existent, scientific validity of the principles of chiropractic, which propose that multiple illness derive from "subluxations" in the spine that can be corrected by chiropractic manipulation. We all have patients who seem to gain relief from chiropractic manipulation, especially for back pain. Of course this is an area where therapy is empiric, some of our own interventions are of questionable benefit, and time probably works just as well.

The placebo response in humans is real; it is complex and probably a basic human tendency to respond to any intervention that we believe will work. Of course, this opens the door to any "treatment" which can be offered with the promise of benefit and the likelihood that many will perceive benefit. Just the presence of a concerned physician, or health care provider of any stripe, will often result in therapeutic response.

Savvy physicians know this, and incorporate strategies to present our therapeutic recommendations in a way that takes advantage of the complex human response mischaracterized as placebo. But, there is a difference. When we add a pharmaceutical to our treatment plan we look for evidence of efficacy and safety, usually from a placebo controlled trial. These trials are designed, of course to neutralize the "placebo" effect and isolate the benefit attributable to the drug. Western, more accurately, scientific, medicine seems to be the exception among health care "traditions" in requiring this evidence of efficacy. It is distressing that evidence based medicine is characterized by some as just one tradition, no better or no worse than any other.

Perhaps the term traditional "Western Medicine" should be really be used to describe the therapeutic strategies based on the four humours of black bile, yellow bile, phlegm, and blood described by Hippocrates and Galen, and part of the armamentarium of Western medicine until a few hundred years ago. Modern scientific medicine stands apart from this, or any other, tradition with its demand for evidence.

But I digress. Getting back to the chiropractors' formulary. There are drugs that are bizarre, placebo based, and worse still, frankly dangerous. Injected phenol is included – I thought that was used in paint strippers. Numerous injected vitamins and minerals without any known therapeutic benefit are included. Hormones, including testosterone and desiccated thyroid are included. While these have appropriate uses, they have obvious mis-use potential. Platelet rich plasma is included – hardly likely to be appropriate for a chiropractor, even with "special training." The chiropractor will require training, not less than 24 hours, approved by the Board of Chiropractic for administering vitamins or minerals IV and not less than 50 hours, for platelet rich plasma or "prolotherapy" – otherwise known as "regenerative injection therapy". That's where phenol apparently fits in. Reassuring? I think not. It appears that a proposal for chelation therapy (25 hours training) did not make it; that is some relief.

It is truly appalling to me that an agency of the state is approving this formulary and "training" – making it apparent that this Board is way outside its area of competence or expertise. This is not approving lisinopril for hypertension, or penicillin for a strep throat. This is dangerous, and putting the people of New Mexico at risk. I suspect it is actually contrary to the principles of most ethical chiropractors.

I am wondering when the state will authorize a Board to regulate witchcraft. Sadly, it may already have one.



Jeremy Gleeson, M.D.



Dawn Travelstead, RD, CDE; Cynthia Petersen, MA, LPCC, LADAC; Michele Zerah, MD; Ellen Kaufman, MD; Mary Wilcox, RN, CDE.
Not pictured: Deborah Zamora-Allen, MD; Douglas Henry, MD.

New Mexico's Most Comprehensive Pediatric Endocrinology Program.

We know that parents want the best care possible for their children. That's why our Children's Center offers New Mexico's most comprehensive pediatric endocrinology program. Our team includes:

- Board-certified pediatric endocrinologists
- Certified diabetes educators
- Pediatric-specialized nutritionists
- A pediatric-specialized behavioral therapist

Consult our pediatric endocrinology team regarding management or referrals at (505) 563-6530 or askps@phs.org. **Your story is our story.**

The Children's Center at Presbyterian
1100 Central Ave. SE
Albuquerque, NM 87106

www.phs.org



Classified Ads & Updates

Family Practice Outpatient Primary Care in Albuquerque is seeking Nurse Practitioner/MD or DO, Bilingual (Spanish is desirable). Positive work environment, work/family balanced established, independent private practice. Flexible substantial part time or full time hours, must be available most Fridays, benefits, very light call. Fax CV/Resume to 505-242-1221 or email at qocarr@yahoo.com

Medical Office for sale in Pennmont Professional Plaza, 7520 Montgomery NE, Suite D-5. 1470 sq. ft. (plus basement). 4 exam rooms. Mature landscaping with views of adjacent park. Ample parking. "Move-in Ready" \$ 165/sq.ft. Contact Anne Apicella (Grubb and Ellis) at 880-7059 or 681-9261 or Anne.Apicella@Grubb-Ellis.com.

Medical office for lease - Newly remodeled office on historic "Pill Hill" near all downtown hospitals. Perfect for solo practitioner or group practice wanting a downtown location. Three exam rooms, a physician's office, nurse's station, reception area and two restrooms. Lease rate of \$16.50 per Sq. Ft. which includes utilities. Available for immediate occupancy. For more information contact Peter at 505-242-4599.

Medical Office available for One Year Lease - Great Location to hospitals. Next to Encino Medical Plaza., 3 patient exam rooms. Large procedure room and Doctors Office, abundance of storage. Two restrooms, one handicap accessible. Parking available Call 843-7901 711 Encino PI NE, Albuq. NM 87102

Private office space for rent within a Clinical Research Facility at 612 Encino Place NE across the street from the Highland Pharmacy/Medical Arts area. Contact Patti at 765-2325 for more information.

Seeking a board-certified psychiatrist to be Principal Investigator /subinvestigator for Phase II-IV clinical trials. Contact Dr. Sandra Lapham at 244-3099 (slapham@bhrcs.org).

Vascular Surgeon or General Surgeon interested in Phlebology - The Vein Center of New Mexico, LLC, desires to establish a long-term relationship with a physician interested in Phlebology. With the advances in the treatment of venous disorders, and the application of advanced laser treatments, this newly recognized Sub-Specialty is a lifestyle friendly option for physicians. Interested individuals should contact Rita Marquez at the Vein Center of New Mexico. Her direct line is 505-314-7061.

Part time Medical Receptionist needed for a busy Orthopedic Practice. Previous medical office experience helpful. Approximately 16-20 hours per week. Please e-mail resume to Shirley@drlegant.com or fax to 338-6621

Specialty practice in women's health is seeking FT office manager. The perfect candidate will have a college degree and at least 5 years' experience managing all aspects of a medical practice. Competitive benefit package offered, salary will be determined based on experience. Please send resume and cover letter to: PO Box 36755, Albuquerque, NM 87176 Attn: Adam Kidd/Open Position

MD Urgent Care is now open on Albuquerque's Westside.

We are pleased to be serving the north valley, Los Ranchos, Corrales, and Rio Rancho communities, with our new 2nd location at 1648 Alameda Blvd NW. Conveniently located near Coor's & Alameda, next to Satellite Coffee, we are easy to find. Always a board certified Emergency Medicine doctor onsite, digital radiology, stat lab, and the friendliest staff in town. Both locations are open daily from 10a - 8p and holidays 12p-5p. Locally owned and operated. For more information please see www.mdurgentcare.com, or join us on Facebook. 7920 Carmel Ave NE and 1648 Alameda Blvd NW phone 855-828-4789



only accredited
**breast care
center in new
mexico**

The Lovelace Women's Hospital Breast Care Center is New Mexico's only NAPBC accredited breast care center for providing the highest level of quality care to its patients.

The Breast Care Center offers a complete range of breast care services in one convenient location, including:

- Rapid Results Assessment Service that allows patients to have the results of their diagnostic mammogram, clinical breast exam and lifetime breast cancer risk assessment within 24 hours.
- High Risk Assessment Program to assess patients' lifetime risk for developing breast cancer and create a custom surveillance plan just for you.

To learn more, give us a call at 727.6900.



Lovelace
Women's Hospital

505.727.6900 | lovelace.com



Data NM

IT Services and Software Design

Office 505.510.1411
Fax 209.774.0354

13120 Parkview Ave NE
Albuquerque, NM 87123

help@datanm.com
<http://www.datanm.com>



NMCancerCenter.org



A New Class of Prostate Treatment Is Now Available at New Mexico Cancer Center

New Mexico Cancer Center is the first facility in the state to begin treating prostate cancer with the first in a new therapeutic class known as autologous cellular immunotherapy. Each dose is manufactured specifically for the individual patient using his own immune cells, making this the start of a new era in personalized medicine.

This new treatment was approved by the U.S. Food and Drug Administration (FDA) for the treatment of men with asymptomatic or minimally symptomatic metastatic castrate resistant (hormone refractory) prostate cancer.

We accept most major insurance plans. Please call **505-842-8171** to find out if this revolutionary new treatment is right for your patients or for more information on any of the services we provide.

NMCC

NEW MEXICO CANCER CENTER
New Mexico Oncology Hematology Consultants, Ltd.



Classified Ads & Updates - cont'd.

Kevin Goodluck, M.D., is moving his office October 4, 2011
West Mesa Professional Center, 4801 McMahon Blvd. Suite 235, 87114
792-2636; www.riograndemd.com.

Ultrasound for Sale :

Toshiba, Nemio XG Color Doppler Ultrasound System for sale. Like new, paid \$35,950 will sell for \$19,900. Call Peter (505-242-4599 ext 06) at New Mexico Specialty Care for more information.

Closing orthopaedic office: furniture, equipment, supplies, for sale. Call: 803-6565

DR AVAILABLE FOR OFFICE COVERAGE: Medicine, urgent care, pediatrics. Board certified. Clean malpractice 30 years (with AP Capital- NMMS insurance), \$55 to \$65/hr (includes malpractice coverage). CV available upon request. Please phone (505)-255-1740 and (505)-417-4279- cell #"

Taking Care of You, While You Are Taking Care of Others.



Paulette Reed

*First Vice President-
Financial Advisor*

(505) 872-5902 direct

(800) 934-1843

www.lindapaulettereed.com

Create your path forward.

RBC Wealth Management

6301 Uptown Boulevard, NE, Suite 100 • Albuquerque, NM 87110



RBC Wealth Management®

© 2011 RBC Wealth Management, a division of
RBC Capital Markets, LLC, Member NYSE/FINRA/SIPC.

Black Dog Shredding
LLC
505-400-7074
Guy Appelman
www.blackdogshredding.com

On-Site Mobile Document Destruction

- Residential/Commercial Purge Service
- We Come to You
- We Meet Federal Compliance
- Issue Certificate of Destruction
- On-Call Bin Service

Your Paper Trail Ends Here!

Local Woman-Owned Business

MINUTES - BOARD OF TRUSTEES August 11, 2011

- I. APPROVAL OF MINUTES – July 14, 2011
The minutes of the July 14, 2011 meeting were unanimously.
- II. MEMBERSHIP APPLICATIONS
 - a. The following applications were unanimously approved for membership.
 - b. COMPLETED MEMBERSHIP APPLICATIONS August 2011

Name	Practice
Fisher DO, Diane A.....	SW Medical Associates – Family Practice
Kiesling MD Carol A.....	Women's Specialists of New Mexico – Ob/Gyn
Muneta MD, Ben.....	Juan Tabo Family Medicine – GP
Saiz MD, Lori D.....	Presbyterian Medical Group – Ob/Gyn
Schmit MD, Berndt P.....	Radiology Associates of Albuquerque – Radiology
Schultz MD, Kurt T.....	MD Urgent Care – Emergency Medicine
Sopko MD, Karen S.....	NM Heart Institute – Cardiovascular Diseases
Trujillo MD, Lucianna.....	After Hours Pediatrics – Pediatrics
Villas-Adams MD, Angelina A.....	SW Gastro Associates – Gastro.
- III. UNFINISHED BUSINESS
 - a. Delinquent Members: New member invoices continue to cause the delinquent member list rise and fall as invoices are paid.
 - b. GAMA Quarterly Membership Professional Development/Educational meetings:
 1. "The NM Corporate Fix: What If . . . & What Are My Options?"
 2. Tuesday, September 20 at Casa Rondena
 - c. GAMA Advocacy Plan:
 1. LHHSC Reception – Wednesday, October 5
 2. 6:00 PM – 8:00 PM Los Poblanos
 - d. Facilities Committee Report – Snyder reported that construction was moving forward nicely.
 - e. GAMA Future Events:
 1. "Family Fun Fiesta" – Sunday, September 18, 2011; 3:00 PM – 6:00 PM, NHCC
 2. GAMA EXPO 2011 – Thursday, October 27- Marriott Pyramid
 1. Preceded by a CME at 3:30 PM
 3. GAMA 2012 Annual Meeting: Tuesday, January 10, 2012
 4. Dr. Gallant requested that all Board members add the event dates to their calendars.
- IV. NEW BUSINESS
 - a. Medicaid Modernization Plan: GAMA Comments
 1. Review of Board member comments
 2. Discussion of the format
 3. Appointed Task Force to draft: Dr. Aamodt- Chair, Dr. Whisler, and Dr. McAneny.
 - b. 2012 Dues Increase: Snyder directed to work with Dr. Shoden and Finance Committee for background justification for a proposed \$15.00 per person dues increase for 2012.
 - c. Resolutions: Presented by Dr. Barbara McAneny.
 1. RESOLUTION #1: Resolution for Fourth tiered pharmaceuticals: adopted unanimously.
 2. RESOLUTION #2: SUPPORT FOR NM HEALTH CONNECTIONS GRANT APPLICATION; adopted unanimously.
 3. Snyder to forward to the NMMS as GAMA Resolutions for consideration at the NMMS Council Meeting on Saturday, August 20.
 4. Copies of Resolutions are in the file.
- V. ANNOUNCEMENTS – Snyder was requested to have legislative talking points for the LHHSC Reception.
- VI. Next Board Meeting: Thursday, September 8, 2011.

There being no further business, the meeting was adjourned.

Respectfully submitted:

Benjamin Q. Chan, M.D., Secretary

Reported by H. Diane Snyder

Approved: September 8, 2011

Candidates for Membership



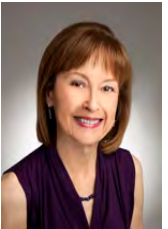
Conlon MD, Christopher P.

is practicing Internal Medicine at Total Community Care, LLC, 904 Las Lomas NE, Albuquerque, NM 87102, 924-2650. Dr. Conlon received his medical degree in 1986 from the Dartmouth Medical School in Hanover, NH. In 1989, he completed a three-year Internal Medicine Residency at the Good Samaritan Hospital in Cincinnati, OH. American Board Certified in Internal Medicine; Dr. Conlon is licensed to practice in NM.



Kesler MD, Denece Odland

is practicing Preventive Medicine at the University of New Mexico Health Sciences Center, MSC10 5550, 1 University of New Mexico, Albuquerque, NM 87131, 272-2517. Dr. Kesler received her medical degree in 1988 from the University of South Dakota in Vermillion, SD. In 1989, she completed a one-year Internal Medicine Internship at the Maine Medical Center in Portland, ME. In 1996, she completed a two-year Preventive Medicine Residency at the St. Paul Ramsey Medical Center in St. Paul, MN. American Board Certified in Preventive Medicine; Dr. Kesler is licensed to practice in NM.



Longfield MD, Lynn Ann

is practicing Pediatrics at the PMG Pediatric Urgent Care, 1100 Central Ave. SE, Albuquerque, NM 87106, 841-1819. Dr. Longfield received her medical degree in 1976 from the University of New Mexico in Albuquerque, NM. In 1977, she completed a one-year Pediatrics Internship at the University of Rochester in Rochester, NY. In 1979, she completed a two-year Pediatrics Residency at the University of Rochester in Rochester, NY. In 1980, she completed a one-year Pediatric Cardiology Fellowship at the University of Rochester in Rochester, NY. American Board Certified in Pediatrics; Dr. Longfield is licensed to practice in NM.



Luley DO, Mark M.

is practicing Psychiatry at Mark Luley - PC, 5901 Camino Corto NW, Albuquerque, NM 87120, 489-2238. Dr. Luley received his degree in 2007 from Nova Southeastern University in Davie, FL. In 2008, he completed a one-year Psychiatry Internship at the University of New Mexico Department of Psychiatry in Albuquerque, NM. In 2011, he completed a four-year Psychiatry Residency at the University of New Mexico Department of Psychiatry in Albuquerque, NM. Dr. Luley is licensed to practice in NM.



O'Cleireachain MD, Marc R.

is practicing General Surgery at New Mexico Surgical Associates, 711 Encino Pl. NE, Albuquerque, NM 87102, 843-7901. Dr. O'Cleireachain received his medical degree in 2005 from the University College of Dublin – School of Medicine & Medical Science in Dublin, Ireland. In 2006, he completed a one-year General Surgery Internship at Maricopa Medical Center in Phoenix, AZ. In 2011, he completed a five-year General Surgery Residency at Maricopa Medical Center in Phoenix, AZ. American Board Certified in General Surgery; Dr. O'Cleireachain is licensed to practice medicine in NM.

CME

October 7, 2011

Annual Health Law Symposium - NM Bar Association, NM Bar Center, 5121 Masthead, NE, Albuquerque, NM

Contact: Sylvia Aguirre at (505) 797-6059 or register online at <http://www.nmbarcle.org/catalog.aspx?browse=ViewProg&catid=1464>

October 16 – 21, 2011

Update And Review Of Internal Medicine 2011
La Fonda Hotel, Santa Fe, NM

Contact: Kathy Breckenridge At 505-272-3942 Or [Http://Hsc.Unm.Edu/Cme](http://Hsc.Unm.Edu/Cme)

October 21, 2011

Advocacy for Cancer Patients Seminar
Pecos River Village Conference Ctr, Carlsbad, NM
Contact: UNM Office of CME (505)272-3942 or <http://www.listentoyourmom.org>

October 27, 2011

Risky Business: Avoiding Common Medical Malpractice Concerns in a Busy Office
Presented by The Doctors Company
To register: <http://gamariskybusiness.eventbrite.com>

October 27-29, 2011

New Mexico Chapter American College of Physicians Annual Scientific Meeting
Sheraton Albuquerque Airport, Albuquerque, NM
To register: www.acponline.org/chapters/nm

October 29, 2011

Bioethics Conference: End of Life Decision Making: Ethics and Practical Applications
El Dorado Hotel & Spa, Santa Fe, NM
Contact: Ericka Contreras at (505) 913-5602 or ericka.contreras@stvin.org

November 4, 2011

James W. Wiggins MD Lectureship - Obstetrics & Gynecology Update
Sheraton Albuquerque Airport, Albuquerque, NM
Contact: Presbyterian Medical Education Department (505) 923-1225

lovelace one-call

DIRECT INPATIENT ADMISSIONS

888.727.7646

A registered nurse is available 24/7 to assist you in finding a bed for your patient. If we are unable to place your patient in a Lovelace hospital, we will assist in finding an appropriate transfer.

- Lovelace Medical Center
- Lovelace Women's Hospital
- Lovelace Westside Hospital
- Lovelace Rehabilitation Hospital

Lovelace
Health System



WE'RE MOVING

OCTOBER 4, 2011

West Mesa Professional Center

4801 McMahon Blvd. NW Suite 235
Albuquerque, NM 87114

505.792.2636
www.riograndemd.com

Insurance Accepted:

- United Health Care
- Lovelace
- Blue Cross Blue Shield
- Cigna • Aetna • Medicare NM
and Presbyterian is pending

**Kevin J
Goodluck, M.D.**

Board Certified
Internal Medicine

ABQ Health Partners Receives Highest Recognition from the National Committee on Quality Assurance

ABQ Health Partners Named First New Mexico Health Care Organization to Receive Top-Level Designation for Patient-Centered Medical Home Program

ABQ Health Partners is proud to announce that the National Committee on Quality Assurance (NCQA) has granted ABQ Health Partners' Rio Rancho Pediatrics a Level III Patient-Centered Medical Home (PCMH) Designation, making it the first health care organization in New Mexico to receive NCQA's highest recognition in this area.

The PCMH program is an innovative model of health care delivery that focuses on collaboration and coordination of patient care. Early evaluations of the PCMH have shown promising results in improving quality of care and lowering costs by increasing access to more efficient, coordinated care. By avoiding unnecessary hospitalization and emergency room visits, these early results are producing savings for payers, purchasers and patients.

To receive recognition as one of NCQA's Patient-Centered Medical Homes, physicians and practice locations are required to meet rigorous quality measures and undergo an extensive application and review process. ABQ Health Partners successfully met all of the strict standards to receive this top honor, Level III.

"ABQ Health Partners is privileged to be the first health care organization in New Mexico to receive this recognition," said Dr. Harry Magnes, President and CEO, ABQ Health Partners. "NCQA's Patient-Centered Medical Home designation is an important accomplishment that shows how an active, on-going relationship between a patient and his or her provider can prevent illness and improve the quality of healthcare. This recognition shows that ABQ Health Partners has tools, systems and resources in place to provide our patients with the right care at the right time."

The PCMH program identifies practices that promote partnerships between individual patients and their personal clinicians – instead of treating patient care as the simply the sum of several office visits. Each patient's care is managed to by clinician-led care teams who provide for all the patient's health care needs and coordinate treatment across the health care system. Medical home clinicians demonstrate the benchmarks for patient-centered care, including open scheduling, expanded hours and appropriate use of proven health information systems.

The NCQA is nationally known for improving the quality and affordability of healthcare for patients and the PCMH program has begun to enhance primary care practices in communities across the nation. To receive recognition, which is valid for three years, ABQ Health Partners demonstrated the ability to meet the program's key elements that embody characteristics of the medical home. The standards are aligned with the joint principles of the Patient-Centered Medical Home established with the American College of Physicians, the American Academy of Family Physicians, the American Academy of Pediatrics and the American Osteopathic Association.

ABQ Health Partners met key program components in the following areas:

- Written standards for patient access and enhanced communications
- Appropriate use of charting tools to track patients and organize clinical information
- Responsive care management techniques with an emphasis on preventive care
- Adaptation to patient's cultural and linguistic needs
- Use of information technology for prescriptions and care management
- Use of evidenced-based guidelines to treat chronic conditions
- Systematic tracking of referrals and test results
- Measurement and reporting of clinical and service performance.

"Thanks to the functionality within gloEMR, I have the capability to see a healthy load of patients when I'm in the clinic and still finish all of my charts so that I can leave by 4:30pm. I'm saving time and money, providing great care and have peace of mind that my practice is in great shape."

–Dr. Shivajee Nallamotheu, D.O.



Records and Data Management, Inc. is a local company and has been in business for 18 years. We help practices save money and time by automating the processes within a practice.

Our products and services include:

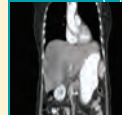
- **Help with ARRA, Meaningful Use**
- **EHR/EMR solutions - gloStream**
- **Scanning solutions and conversions**

Albuquerque, NM 87109 (505) 888-3620 or (800) 460-0388



IMAGING EXCELLENCE • CUSTOMER SERVICE • COMMITMENT TO CARING • SAME DAY SERVICE

COMPUTED TOMOGRAPHY (CT)



MAGNETIC RESONANCE IMAGING (MRI)



INTERVENTIONAL RADIOLOGY



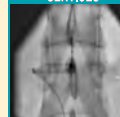
ULTRASOUND & VASCULAR ULTRASOUND



GENERAL RADIOLOGY (X-RAY)



PAIN MANAGEMENT SERVICES



BREAST IMAGING



NUCLEAR MEDICINE/PET



TO SCHEDULE YOUR APPOINTMENT CALL

505-998-5925

WWW.XRANM.COM

GAMA Events are now listed in detail on the GAMA Website.

Visit <http://gamamed.org/> and check the calendar!



24 Hour
7 days a week
Communication Service

MAC provides physicians and their patients with state-of-the-art communication services including:

- SMS Text-Messaging
- Real-Time Appointment Scheduling
- E-voice Messaging
- Professionally Trained Communication Staff
- HIPAA Compliant



Call 888.549.7683
Ask about our GAMA Member Discount



Providing insurance services to New Mexico physicians, their families and employees for more than 30 years

Endorsed by the New Mexico Medical Society

- ◆ GROUP BENEFITS
- ◆ LIFE INSURANCE
- ◆ HEALTH INSURANCE
- ◆ DISABILITY INCOME
- ◆ LONG-TERM CARE INSURANCE



7105 Prospect Place NE
Albuquerque, NM 87110
505-888-4421
1-800-279-0391

steve@agencyfortheprofessions.com
www.agencyfortheprofessions.com

Photos from GAMA Family Fun Fiesta



Photos from GAMA Family Fun Fiesta



VENDORS

ABQ Arts ~ Arts Magazine
Aflac.com ~ Supplemental Insurance
Agency for the Professions ~ Medical Practice Insurance
Akala's Jewelry ~ Custom Jewelry
Albuquerque Grand Senior Living ~ Senior Living and Assistance
Alphagraphics ~ Printing
Armed Response Team ~ Security and Alarms System
Bank of America ~ Bank
Bank of the West ~ Bank
Barrett Foundation ~ Nonprofit for homeless women and children
Baylor Scoliosis Center ~ Scoliosis information
Black Dog Shredding ~ Document destruction
Bilingual Advantage Inc. ~ Bilingual services and training
Blue Cross and Blue Shield of New Mexico ~ Health Insurance
Burgmaier & Helton CPA ~ CPA
Compatible Filing Products ~ Filing products
Data NM ~ Information technology
Digitech ~ Copier professionals
The Doctors Company ~ Malpractice insurance
Document Imaging of the Southwest ~ Document management
E Strategy Medial Waste Solutions ~ Medical waste solutions
Essentials ~ Massage therapy
Excell Staffing ~ Employment Staffing
Exhibit-It ~ Marketing experts
Farmers Insurance ~ Life, home and car insurance
FastPark & Relax ~ Airport parking
Find your Casa - Keller Williams ~ Home realtor
First National of Merchant Services ~ Credit card processing
Green Sync Systems ~ Medical billing
Greenway Medical Technologies ~ HER
Heritage Home Healthcare ~ Home healthcare
Hospice of New Mexico ~ Hospice
Hospital Services Corporation ~ Healthcare Industry Services
IronStone Bank ~ Bank
It's all about Satellites ~ Direct TV
Jadd Fong Travel ~ Travel agent
Janice F. Moranz MD ~ Dermatologist
Jan-Pro Cleaning Systems ~ Professional cleaning
Joy Junction ~ Nonprofit services for the homeless
Just Dine In ~ Food delivery
kikapaprika.com ~ Women's clothing
La Vida Llena ~ Retirement community
Liberty Mutual ~ Life, home and car insurance
Lovelace Health System ~ Healthcare Industry Services
MAC ~ Answering Service
Maestas and Ward ~ Business realtor
Manzano Day School ~ Private school
Medical Document Imaging ~ Document management
Medical Practice Solutions, Inc. ~ Medical billing and practice management
Menicucci Insurance Agency ~ Business and malpractice insurance
New Mexico Health Resources ~ Recruitment
New Mexico Medical Society ~ State medical society
NM Workforce Connection ~ Employment help
Nurse Advice New Mexico ~ Medical help line
Office Max ~ Office Supplies
Pathology Consultants of New Mexico ~ Lab
Petroglyph Pathology Services ~ Lab
POD ~ Information technology
Premier Designs ~ Jewelry
Prepaid Legal ~ Asset protection
Presbyterian Healthcare ~ Healthcare
RBC Wealth Management ~ Wealth Management
Records and Data Management ~ Document, Record Management
Sandia Medical Records ~ EMR
Silpada ~ Silver Jewelry
Sonrise Technology Solutions ~ Information technology
STAT Transcriptions ~ Transcription Service
The Cleanery ~ Dry Cleaners
The Rio Rancho Sleep Center ~ Sleep Center
US NM Federal Credit Union ~ Credit Union
Vista Care ~ Hospice
Western Assurance ~ Business and malpractice insurance
X-Ray Associates ~ Outpatient radiology

GAMA EXPO

Thurs, Oct. 27, 2011

5 - 8 p.m.

At the Marriott
Pyramid

FUN * FOOD * PRIZES
LIBATIONS * NETWORKING



*This event is free if you register online,
\$10 at the door if you do not register.*

*Event geared to physicians and medical
office staff.*

Register at:

<http://gamaexpo2011.eventbrite.com>

GAMA EXPO

What is it? Why Should I go?

The GAMA Expo, is Thursday October 27 from 5 to 8:00 p.m. at the Marriott Pyramid. <http://gamaexpo2011.eventbrite.com> to register

The Expo is a yearly event that allows GAMA members to network and learn new trends that will help you keep your practice up-to-date.

Last year, we had over 75 vendors and around 150 attendees.

Here's the top 10 reasons to attend this year's Expo:

10. Meet your colleagues
9. Learn something new to improve your medical practice.
8. Learn something new to create life balance.
7. Win a FABULOUS door prize (must preregister and be present to WIN!)
6. Free food!
5. Buy a raffle ticket and a chance for a GREAT prize to help some one less fortunate. (This year's nonprofit partner is the Barrett Foundation.)
4. Make new friends.
3. IT'S FREE
2. Support your professional membership organization.
1. Did we mention, it's free to GAMA members!

GAMA EXPO Partners with the Barrett Foundation

Brother Mathias Barrett was the legendary friend of the homeless; his life's work was providing shelter to the homeless men and women throughout the United States. In 1985, he founded Barrett House emergency shelter for women and children. In 2005, Barrett House moved into its present location, expanding its capacity to provide a safe and healthy environment to more clients. ***Barrett Foundation is an independent, nonprofit organization in Albuquerque, New Mexico, helping homeless women and children build better lives. In addition to food, clothing and shelter, Barrett Foundation provides case management, critical skills training and the support needed to plan and establish a more stable future for themselves and their children.***

The Barrett Foundation will benefit from a raffle at this year's Expo.

Items to be raffled are:

- Caribbean Cruise
- 2-Day Get-A-Way to Las Vegas
- 7 different Restaurant Gift Certificates

Raffle tickets are \$1.00 each and you must be present to win. Winners will be drawn at 7:45 p.m.

You may also bring the following in-kind donations to the Expo for the Barrett Foundation

- Toilet paper
- Diapers sizes 4, 5, & 6
- Paper goods: bowls, Styrofoam cups, napkins, etc.
- Tampons
- Paper towels
- Hand towels and bath towels
- Dry laundry detergent
- Brown sack lunch bags
- Socks, underwear, and pajamas for women and children
- Wall calendars
- Postage stamps
- Herbal teas
- Thermoses to keep drinks warm
- One heavy duty flash light for evening staff to better monitor the parking lot
- Birthday cards and decorations for women and children who have birthdays while in the shelter
- Appointment books/planners to allow the women to better track their appointments
- Flash drives to allow the women to save their documents
- Individual packets of cocoa and cider mix
- Sheet sets: twin, queen, and king
- Pillows
- Crib - we have a resident who is about to give birth and we need a crib for the newborn
- Medical Supplies: Ibuprofen, band aids, cortisone cream, etc.

GAMA HOSTED CME
October 27, 2011

Time: 3 - 5:00 p.m.
Before the GAMA EXPO
Marriott Pyramid

Risky Business: Avoiding Common Medical Malpractice Concerns in a Busy Office

Purpose:
Patient safety, office systems, and malpractice liability—how do they fit together? This seminar will provide an overview of “systems thinking” and its role in patient safety.

Malpractice case presentations will illustrate where systems went wrong and patient safety was compromised.

Each case presentation will also provide “take home points” to enable attendees to implement patient safety changes in their offices.

To register: <http://gamariskybusiness.eventbrite.com>

Manzano Day School

Joy in Learning® Since 1938

**Now accepting applications
for the 2012-2013 school year**

Independent, non-profit
pre-kindergarten through grade five

Bus service available from
the Westside & NE Heights

1801 Central Avenue NW
505-243-6659
www.manzanodayschool.org



Manzano Day School admits students without regard to religion, race, color, creed, gender, gender identification, disability, age, sexual orientation or ethnic background.

We fight frivolous claims. We smash shady litigants. We over-prepare, and our lawyers do, too. **We defend your good name.** We face every claim like it's the heavyweight championship. We don't give up. We are not just your insurer. We are your legal defense army. **We are The Doctors Company.**

The Doctors Company built its reputation on the aggressive defense of our member physicians' good names and livelihoods. And we do it well: Over 82 percent of all malpractice cases against our members are won without a settlement or trial, and we win 87 percent of the cases that do go to court. So what do you get for your money? More than a fighting chance, for starters. Our medical professional liability program is exclusively endorsed by the New Mexico Medical Society. To learn more about our benefits for NMMS members, call (800) 880-9485 or visit us at www.thedoctors.com.



www.thedoctors.com

GAMA Calendar of Events

GAMA Legislative Reception for Legislative Health & Human Services Committee

October 5, 2011

Los Poblanos Inn & Cultural Center

5:30 to 8:00 p.m.

<http://gamalegisreception2011.eventbrite.com>

CME for GAMA MEMBERS and their Practice Managers BEFORE the GAMA EXPO

Thursday, October 27, 2011

Physician Networking Event

Marriott Pyramid

3-5:00 p.m.

Risky Business: Avoiding Common Medical Malpractice Concerns in a Busy Office

to register:

<http://gamariskybusiness.eventbrite.com>

GAMA Expo

Thursday, October 27, 2011

Physician Networking Event

Marriott Pyramid

5-8 p.m.

This year our nonprofit partner will be Barrett Foundation to register:

<http://gamaexpo2011.eventbrite.com>

GAMA Emeritus - to be determined but attend the Legislative Reception and the GAMA EXPO

SAVE THE DATE! – PLAN TO ATTEND **GAMA Annual Meeting**

Tuesday, January 10, 2012

Marriott Pyramid

6:00 to 9:00 p.m.

NM Medical Group Management Association Calendar of Events

CME for GAMA Practice Managers and NM MGMA Office Staff Members only (not open to NM MGMA Vendor Members)

BEFORE the GAMA EXPO

Thursday, October 27, 2011

Physician Networking Event

Marriott Pyramid

3-5:00 p.m.

Risky Business: Avoiding Common Medical Malpractice Concerns in a Busy Office
to register:

<http://gamariskybusiness.eventbrite.com>

GAMA Expo

Thursday, October 27, 2011

Networking Event

Marriott Pyramid

5-8 p.m.

This year the nonprofit partner will be Barrett Foundation to register:

<http://gamaexpo2011.eventbrite.com>

SAVE THE DATE! – PLAN TO ATTEND

November 17-18, 2011 Healthcare Financial Management Association NM Chapter And NM Medical Group Management Association This joint conference between NMMGMA & NM HFMA is scheduled for November 17-18, 2011

at the Sheraton Uptown in Albuquerque.

The program agenda is being finalized and will feature such topics and speakers as:

* Washington Update presented by Jennifer Martin, Government Affairs Representative, MGMA

* How to Build a Better You presented by Bryan Dodge. Dodge Development

As more sessions are finalized, additional information will be forthcoming.

GAMA Calendar of Events

GAMA Legislative Reception for Legislative Health & Human Services Committee

October 5, 2011

Los Poblanos Inn & Cultural Center

CME for GAMA MEMBERS and their Practice Managers BEFORE the GAMA EXPO

Thursday, October 27, 2011

GAMA Expo (after CME)

Thursday, October 27, 2011

Physician Networking Event

See page 15 for complete listing

NM Medical Group Management Association Calendar of Events

CME for GAMA Practice Managers and NM MGMA Office Staff Members only (not open to NM MGMA Vendor Members)

BEFORE the GAMA EXPO

GAMA Expo

Thursday, October 27, 2011

SAVE THE DATE! – PLAN TO ATTEND

November 17-18, 2011 Healthcare Financial Management Association NM Chapter And NM Medical Group Management Association This joint conference between NMMGMA & NM HFMA is scheduled for November 17-18, 2011

at the Sheraton Uptown in Albuquerque.

See page 15 for complete listing



7770 Jefferson NE, Suite 420 Albuquerque, NM 87109

www.gamamed.org

PRSR STD
U.S. POSTAGE
PAID
ALBUQUERQUE, NM
PERMIT NO 500